

# Empowered Voices Speech and Language Therapy Ltd.

## *Job Specification*



## Senior Speech and Language Therapist

Working in Ealing and the wider West London Area.

Salaries ranging from £48,000 to £55,000 based on experience (Band 7 full time equivalent).

We are a small, values-led speech and language therapy schools-based service. Our service is committed to child-centred practice, listening and responding to the views of clients as well as colleagues to provide effective therapy and shape an ever-growing service with wellbeing and sustainable workloads at the forefront.

### Where and how you can work

We currently have opportunities to work in special schools, mainstream schools and resource bases (ARP/SRP) within mainstream schools. The majority of the working day will be based within a school setting, with opportunities to complete admin at home.

You will have opportunities for regular clinical supervision (2-6 weekly, depending on what you need) and protected CPD and individual funding to nurture professional growth and reflection.

Working days are typically 7.5 hours. We offer a flexible working pattern, and are open to your preference for full time, part time, term time only.

### What you'd be doing in this role

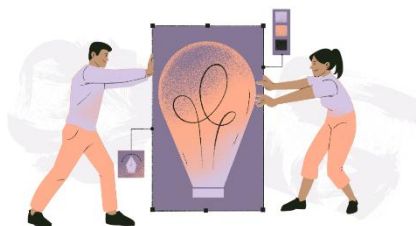
At Empowered Voices, we work together closely with young people, school staff and families to provide personalised support that nurtures more confident communication.

- You will carry out tailored assessments that capture the young person's voice, and individualised, motivating therapy to support children's communication grow.
- You have autonomy to plan individual, group and classroom based activities, that best meet the needs of your caseload.

Check out [www.empoweredvoices-slt.com](http://www.empoweredvoices-slt.com) for more info.

- You will have time to work collaboratively and creatively with teachers, SENCos and support staff to cultivate communication supportive environments and deliver training.
- You will use your experiences working with clients and their support systems to write reports and therapy programmes that give clear goals and strategies.
- You have opportunities to shape the service as it grows, in line with your interests and experience.

You will mainly be based in Ealing schools. The exact mix of schools and settings will be agreed collaboratively, taking into account your experience, interests and service opportunities.



## You'll be a good fit if ...

- You have our non-negotiables, which are to do with legal compliance:
  - a recognised degree in Speech and Language Therapy
  - Current HCPC registration.
  - Membership of RCSLT (or eligibility and intention to join).
  - Right to work in the UK
- You are committed to inclusive, neurodiversity affirming and child-led practice and are passionate about this with your team to help understanding and ideas grow.
- You have led on complex cases and liaised with wider multidisciplinary teams within school settings, to support children with communication differences grow.
- You enjoy building relationships with children, families and school staff, and curiosity in their experiences and ideas.
- You regularly reflect on the organisation systems that you have in place, to facilitate increasingly efficient ways of working (for managing a caseload and utilising admin time).
- You have a passion within speech and language therapy that you'd like to lead on within the team e.g. DLD, social communication, selective mutism, SEMH, speech sounds.
- You value universal supports including running trainings and drop ins, and creating advice sheets, to support a school's communication support at a whole school level.
- You are interested in service development and optimising our work with schools.
- You have experience supervising and mentoring team members, and enjoy using solution focused based approaches.



Check out [www.empoweredvoices-slt.com](http://www.empoweredvoices-slt.com) for more info.

# What's in it for you?

**You can work in a small team where your voice is heard and ideas shape the service.**

- We have positions available that can be term-time only, full-time or part-time.
- Admin time is built into your school day.
- Caseloads focus on providing therapy for children in a timely manner.
- There are opportunities to work in mainstream schools, resource bases (like ARPs), or special schools based on your interests and confirmed contracts.
- All meetings are designed to support your personal practice and professional growth.
- Staff have a dedicated CPD budget of £300 per year, alongside regular, tailored 1:1 supervision (adapted for your preferences and experience).
- Creativity is nurtured, with time to create personalised resources for your settings.

## How to Apply

We make hiring decisions based on your experience, skills, and passion.

To apply, please send a covering letter (500–800-word limit) to [maddy@empoweredvoices-slt.com](mailto:maddy@empoweredvoices-slt.com) and let us know your preferred working pattern and pronouns.

The **closing date** for applications is **Sunday 3<sup>rd</sup> May 2026**.

If you would like an informal chat about the role before applying, please contact Maddy at [maddy@empoweredvoices-slt.com](mailto:maddy@empoweredvoices-slt.com) or via phone (either a call or message are welcome) at 07805919076.

**Interviews will be held on Thursday 21<sup>st</sup> May 2026**, face to face in Ealing. Let us know of any reasonable adjustments you may need during the hiring process.

Employment in this post requires an Enhanced Disclosure and Barring Service (DBS) check, which the company will cover the cost of.

**We celebrate all types of skills and backgrounds, so even if you don't feel like your skills entirely match what's listed above, we still want to hear from you!**

Check out [www.empoweredvoices-slt.com](http://www.empoweredvoices-slt.com) for more info.